



London Meed Primary School Newsletter

8th Sept 2025

Bravery Curiosity Resilience Community Respect

Welcome back to the start of a new academic year and a huge warm welcome to the new families that are joining us - please ask the office if you need any help.

The children came back brilliantly last week and we were so excited to see them all - they have all grown so much over the summer. Our new Reception children are having visits at home from their new teachers, but start school tomorrow doing short sessions to help settle them in. Tomorrow, Year 5 start their weekly swimming lessons, which will run until December - they are very excited. On Thursday, Year 3 are off to Camp WoWo as their stunning start to their topic on the Stone Age - they have an exciting day ahead trying out Stone Age skills. On Friday, Year 1 have their stunning start with the 'Hedgehog Man' coming to visit. We also start our Hot Chocolate sessions on Friday afternoon with me. This is for those children who always work hard, always have marvellous manners and are fabulous role models for the rest of the school.

'Meet The Teacher' sessions:

Apart from Reception, all other year groups invite parents and carers in for a 'Meet the Teacher' session where they tell you about the coming year for your year group. This is for all the parents and carers of that year group at the same time and not an individual session. These are on the following dates and all start at 2.45pm - please enter the school via the appropriate playground:

Monday 15th September - Year 1

Tuesday 16th September - Year 3

Wednesday 17th September - Year 4

Friday 19th September - Year 5

Monday 22nd September - Year 2

Tuesday 23rd September - Year 6

We have two exciting projects happening over this year - Therapeutic behaviour and OPAL.

Therapeutic Behaviour:

The first is developing our new Behaviour Policy and Curriculum. We are starting down the Therapeutic Behaviour approach and over the last year, staff have been training in understanding Therapeutic Behaviour. We have written a new Behaviour Policy, which will be shared with you in the next few weeks, and this will develop over the next two years. Part of this project is using an approach called 'When the Adults Change, Everything Changes'. We already made a positive start with the new 'Meet and Greet' system last term which will continue. You will also hear us using the words - 'Ready, Respectful, Safe'. These three words replace our Golden Rules and will be used to remind children of what they need to do. We are also focussing on Wonderful Walking around the school, Legendary Lining Up and Terrific Tidying. Our previous sun and cloud system has gone and each class now has a Recognition Board. This focuses on the key behaviour we are focussing on and the children's names are



London Meed Primary School Newsletter

8th Sept 2025

Bravery Curiosity Resilience Community Respect

put on these when they are seen doing the key behaviour. The project also gives us access to parental training and live sessions for parents once a month. More details will follow in our weekly newsletters. We really hope you begin to see the positive changes this will make to the school and our community.

OPAL - Outdoor Play and Learning:

We really do have an exciting year ahead. Some of the children may have come home last week talking about OPAL and our new plans for playtimes and lunchtimes. Over the next two years, we are part of a project to develop playtimes and lunchtimes and make them much more fun for the children. We will be sharing more information about this as the year goes on as we start to move over to the new system, but part of our initial changes have been to introduce more equipment to the children. Some of this is ready-made equipment such as balls, frisbees etc, but most of the equipment is from everyday materials we can use such as tyres, pallets, blocks etc. The children are really excited about the new changes and Year 6 are desperate for us to get this up and running so they can make the most of it this year. We now have use of the MUGA (basketball court) on the Woodlands Meed site Monday to Thursday for our lunchtimes. The children are now timetabled for this each lunchtime and this is where they can now play football, instead of on the field or the playground. On Friday, we have girls football on the field. We are collecting items for OPAL, so please if you do have any items that you can donate, bring them to the office. If you have any connections to builders, supermarkets or garages where you can get any of these items, please can you help us source these items. See below for items needed:

Building and den building area:

Pallets, planks of wood, tarpaulin and ground sheets, thick ropes, large water bottles (think office water system), large bits of material, old cable reels, old pop up tents that work, milk crates, delivery crates, bakery trays,

Mud Kitchen:

Old saucepans, frying pans, utensils - wooden, metal or plastic, plastic or metal bowls, plastic or metal cups and plates, washing up bowls, gardening equipment such as pots, hand tools, spades, sieves and colanders



Water and sand area:

Drain pipes, guttering, watering cans, measuring jugs, old water and sand tray toys, buckets

Role play and Circus area:

Any dressing up clothes or old clothes - jackets, coats, hats, hand bags, scarves, dresses, waistcoats, trousers, prams, buggies, dolls, crutches, walking frames, suitcases,

Small World:

Dolls, cars, train sets, prams, pushchairs, lego, construction toys,

Bike and Scooter area:

Bikes suitable for 4- 11 year olds, scooters, ramps, helmets, knee and elbow pads



London Meed Primary School Newsletter

8th Sept 2025

Bravery Curiosity Resilience Community Respect

Reminders:

If you are bringing your dog on the walk to school, please make sure they are tied up in a place away from where the children come in if they are likely to bark. We had a dog last week, who was finding it tricky being tied up and was barking a lot at the children walking past.

Social Media - Facebook and Instagram:

We are in the process of setting up a school Facebook and Instagram Page. We hope that these will help you see more of what happens at school each day as well as showcase events and activities. We will be sending home a link to sign up for your child to be included on both pages. We do ask that you give permission as it can be really difficult to exclude children from photos especially at events such as nativities and carol concerts. Watch this space!

Home-School Agreement:

We have developed the current Home-School Agreement and will be sending the new version home for you and your child to sign.

School Games Gold Award:

We are pleased to announce that after lots of hard work and commitment, London Meed have been awarded the Sports Games Gold Mark Award. Well done to our PE team for this achievement as we continue to look forward to ways to further and improve our school.



Google Classrooms:

A reminder that Google Classrooms are now set up for your child's new class. This year they will be organised by year group rather than class. We have had an unprecedented number of requests for account resets due to lost and forgotten passwords this year. Please can we ask that in order to help reduce the office's workload, you keep your child's password safe as we do not have access to the chosen password and the account will then require resetting. Many thanks.

EYFS: mcjjregk Yr 1: vxqecmw Yr 2: nto2tyhi Yr 3: si4orbtc Yr 4: sgo6rcjd Yr 5: nyrv4vvg Yr 6: m36lztb5



London Meed Primary School Newsletter

8th Sept 2025

Bravery Curiosity Resilience Community Respect



25/26 | Term Dates

AUTUMN | **Wed 3rd Sept**



Fri 19th Dec

Half Term 27th Oct – 31st Oct

INSET DAYS: 3rd Sept & 3rd Nov

SPRING | **Mon 5th Jan**



Fri 27th Mar

Half Term 16th Feb – 20th Feb

INSET DAYS: 5th Jan & 23rd Feb

SUMMER | **Mon 13th Apr**



Wed 22 July

Half Term 25th May – 29th May

INSET DAYS: 1st June

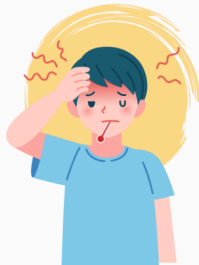
PE Days

Please remember to send your child in their PE kits on their allocated PE day below:

Apples - Monday and Friday
Cherries - Monday and Friday
Yr1 - Tuesday and Thursday
Yr2 - Monday and Wednesday
Yr3 - Tuesday and Thursday
Yr4 - Thursday and Tuesday
Yr5 - Tuesday and Thursday
Yr6 - Wednesday and Friday



IS MY CHILD TOO ILL FOR SCHOOL?



It can be tricky deciding whether or not to keep your child off school, nursery or playgroup when they're unwell.

There are government guidelines for schools and nurseries about managing specific infectious diseases at GOV.UK. These say when children should be kept off school and when they shouldn't. For more guidance please visit <https://www.nhs.uk/live-well/is-my-child-too-ill-for-school/>

If you do keep your child at home, it's important to notify the school on the first day before 9.20am to let them know that your child won't be in and give them the reason. You can leave a message on the absence line 01444 232336 or report their absence on the Study Bugs App

If your child is well enough to go to school but has an infection that could be passed on, such as a cold sore or head lice, please let their teacher know via their year group email address.



London Meed Primary School Newsletter

8th Sept 2025

Bravery Curiosity Resilience Community Respect

Plea from the Orchard

Are you planning a summer clean or clear out? Do you work for a company that may be able to help us out? Our Orchard is on the lookout for some preloved items and we would be very appreciative if you are able to donate any of the below.

Please get in touch with us at theorchard@londonmeedprimary.co.uk if you are able to help us out.

Kind regards, The Orchard Team

- Plastic / wood picnic table
- Wooden cable reels of different sizes from small to big
- Corrugated plastic (see pic)
- Small / medium sized garden Stones
- Top soil
- Percussion instruments / musical instruments
- Marbles – big or small
- Plastic play food and plastic accessories for a play kitchen / cafe
- Playmobil or Lego figures
- Wooden crates (apple crates style)
- Guttering or pipes all sizes and lengths full and half
- Wooden spoons
- Ribbons of different colours, sizes
- Good quality beanbags to sit on
- Wicker baskets / picnic baskets
- Small indoor role play table and chairs
- Craft bits and pieces (stickers, envelopes, coloured paper, unused notebooks, collage stuff, old cards, children's magazines, paper plates, pipe cleaners etc.)
- Garden trellis





London Meed Primary School Newsletter

8th Sept 2025

Bravery Curiosity Resilience Community Respect

🎤 Welcome Back from the LMA! 🎤

A big warm welcome to all our families – whether you're returning or joining our school for the first time. We hope you've had a wonderful summer and are ready for an exciting year ahead.

The LMA is here to support our children, teachers, and school community by raising funds, organising fun events, and creating opportunities for everyone to get involved. None of this would be possible without your continued support – thank you!

We already have a fantastic calendar of events planned for children, families, and the wider community. Dates will be added to each newsletter and shared on our brand-new social media (yes, we have one now!!).

- 🍌 **Colour Run** – Thursday, 25th September
- 🎵 **Halloween Disco (Years 1–6)** – Thursday, 23rd October
- 🐯 **Tiger Who Came to Tea Party (Reception)** – Friday, 24th October
- 🎬 **Movie Night** – Friday, 21st November
- 🌿 **Christmas Wreath Workshop** – Wednesday, 26th November
- 🎄 **Christmas Fair** – Friday, 5th December
- 💕 **Valentine's Disco** – Thursday, 12th February
- 🐣 **Easter Disco** – Thursday, 26th March
- ☀️ **Summer Fair** – Friday, 3rd July
- 🌞 **Summer Disco** – Monday, 20th July
- 🎓 **Year 6 Leavers Disco** – Tuesday, 21st July **and more to come...**

We're also planning some **parent-focused social activities**, and will share more news on these very soon!

As you know, the success of the LMA and all our events is only possible thanks to the amazing help of volunteers. This year we'll be trying out a new approach by breaking up LMA activities into smaller teams that we hope will make it less daunting and easier for everyone alongside our already busy lives. We'd love to have more hands on board to make our events bigger and better for the children.

Please take a moment to check out the announcements below!

Here's to another brilliant year filled with fun, community spirit, and making lasting memories for our children.

Tiago, Katy and everyone from the LMA Committee

London Meed Association is on Instagram!!

We've just set up a brand-new Instagram account to share all things LMA in a quicker, easier, and more fun way. You'll find:

- 📅 Updates on upcoming events
- 💡 Fundraising news and planning
- 🔗 Links to all our important websites
- 📌 Info you can save and revisit anytime
- 🤝 Collaborations with our fantastic local businesses

If you're on Instagram, we'd love for you to give us a follow @londonmeedassociation ♥



London Meed Primary School Newsletter

8th Sept 2025

Bravery Curiosity Resilience Community Respect

And if Instagram's not your thing, no worries — we'll still send out all the important updates by email as usual 👍

🎨 LMA Colour Run 🎨

Get ready for a splash of colour and a whole lot of fun at the **LMA Colour Run!**

This exciting family-friendly event combines a vibrant colour powder run with fun obstacles along the way. Whether you run, jog, walk, or skip your way around the course, you'll be showered in bright colours at our colour stations. It's all about **fun, laughter, and getting gloriously messy!**

📅 **When:** After school, Thursday 25th September

🎫 **Tickets:** On sale very soon – keep an eye out!

Grab your trainers (and maybe an old T-shirt!) and join us for an unforgettable afternoon full of colour and smiles.

☀️ Introducing the Kindness Cup ☀️

We're excited to launch a new LMA initiative called the **Kindness Cup** – a simple but powerful way for our school community to support one another.

When purchasing tickets for LMA events and activities, families will now have the option to add a small, voluntary donation to the **Kindness Cup**. All contributions go into a dedicated fund that helps ensure every child can take part in school events, regardless of financial circumstances.

The **Kindness Cup** will remain at school and will be managed directly by the school. The LMA's role is simply to collect and donate the funds raised through your generosity. This way, the school can ensure support reaches the families and children who need it most.

✨ How it Works ✨

- If, for any LMA-related activity, you need extra help to cover the cost of tickets or participation, please speak directly with the school's leadership team.
- The school will provide the required support from the **Kindness Cup**.
- No records or "tabs" will be kept, and the PTA will have no visibility of which families or activities the funds are used for.

This ensures the **Kindness Cup** remains discreet, respectful, and focused entirely on making sure every child can join in.

Your kindness will make a real difference – whether it's covering the cost of an event ticket, game tokens or other opportunities that children might otherwise miss. Together, we can create a more inclusive, caring community where no child is left out. ❤️





London Meed Primary School Newsletter

8th Sept 2025

Bravery Curiosity Resilience Community Respect

Forthcoming diary dates

Date	Event
9th September	Year 5 - Swimming lessons start
11th September	Year 3 - Camp Wowo trip
12th September	Hedgehog Man for Year 1
15th September	EYFS - start full time
15th September	'Meet the Teacher' meeting for Year 1 Parents and Carers from 2.45pm
16th September	'Meet the Teacher' meeting for Year 3 Parents and Carers from 2.45pm
17th September	'Meet the Teacher' meeting for Year 4 Parents and Carers from 2.45pm
19th September	'Meet the Teacher' meeting for Year 5 Parents and Carers from 2.45pm
22nd September	'Meet the Teacher' meeting for Year 2 Parents and Carers from 2.45pm
23rd September	'Meet the Teacher' meeting for Year 6 Parents and Carers from 2.45pm
25th September	Year 2 - Arundel Castle trip
25th September	LMA Colour Run
29th September	Schools photos - Individual
1st-3rd October	Year 6 - Residential Stay
8th October	Open morning for new Reception starters September 2026
10th October	Year 1 - Wakehurst trip
10th October	Science afternoon at Burgess Hill Girls School - Year 5 girls
17th October	Year 4 - London Trip
22nd October	6 Weeks in meeting for current Reception Parents and Carers
22nd October	Harvest festival - donation for harvest in today please
23rd October	6 Weeks in meeting for current Reception Parents and Carers
23rd October	LMA - Discos (Year 1 - 6)
24th October	Reading Raffle and extra play time for House Point winners
24th October	LMA - 'Tiger Who Came To Tea' Tea Party (EYFS)
27th October - 3rd November	Half Term
3rd November	INSET Day - School Closed
5th November	Open morning for new Reception starters September 2026



London Meed Primary School Newsletter

8th Sept 2025

Bravery Curiosity Resilience Community Respect

11th November	Parent's Evening
13th November	Parent's Evening
14th November	Children in Need
19th November	Open morning for new Reception starters September 2026
21st November	LMA - Movie Night
26th November	LMA - Wreath Making
26th November	Open morning for new Reception starters September 2026
3rd December	Open morning for new Reception starters September 2026
3rd December	Elf Run
5th December	Christmas Fayre
12th December	Christmas Jumper Day
12th December	Junior Governors trip to London
16th December	Carol concert rehearsal KS2
17th December	Children's Christmas Party Day including Christmas lunch
18th December	Carol Concert KS2
19th December	School finishes at 1.30pm for the Christmas holidays
22nd December - 5th January	Christmas Holidays
6th January	INSET Day - School Closed



Congratulations to Henry P in Year 4 who over the holidays climbed Mount Snowdon to raise money for The Martlets Hospice. He completed the challenge in an impressive 5 hours up and down